

DevDen

Discover | Design | Develop

www.devdensolutions.com

Company Overview

DevDen is a Creative design and Technology based Business solution providing company founded By Mr. Ram Gowtham with a vision to be the **technologically advanced** and most admired organization, providing high quality and cost-effective services with a long-term client relationship strategy

DevDen is a design & creative wing of SMI group of companies. SMI is a **CMMI level 3** company with 650+ employees and with 6 development centres located USA, UAE, Bangalore, Chennai, Madurai and Rajapalayam, in India.

SMI Compliances



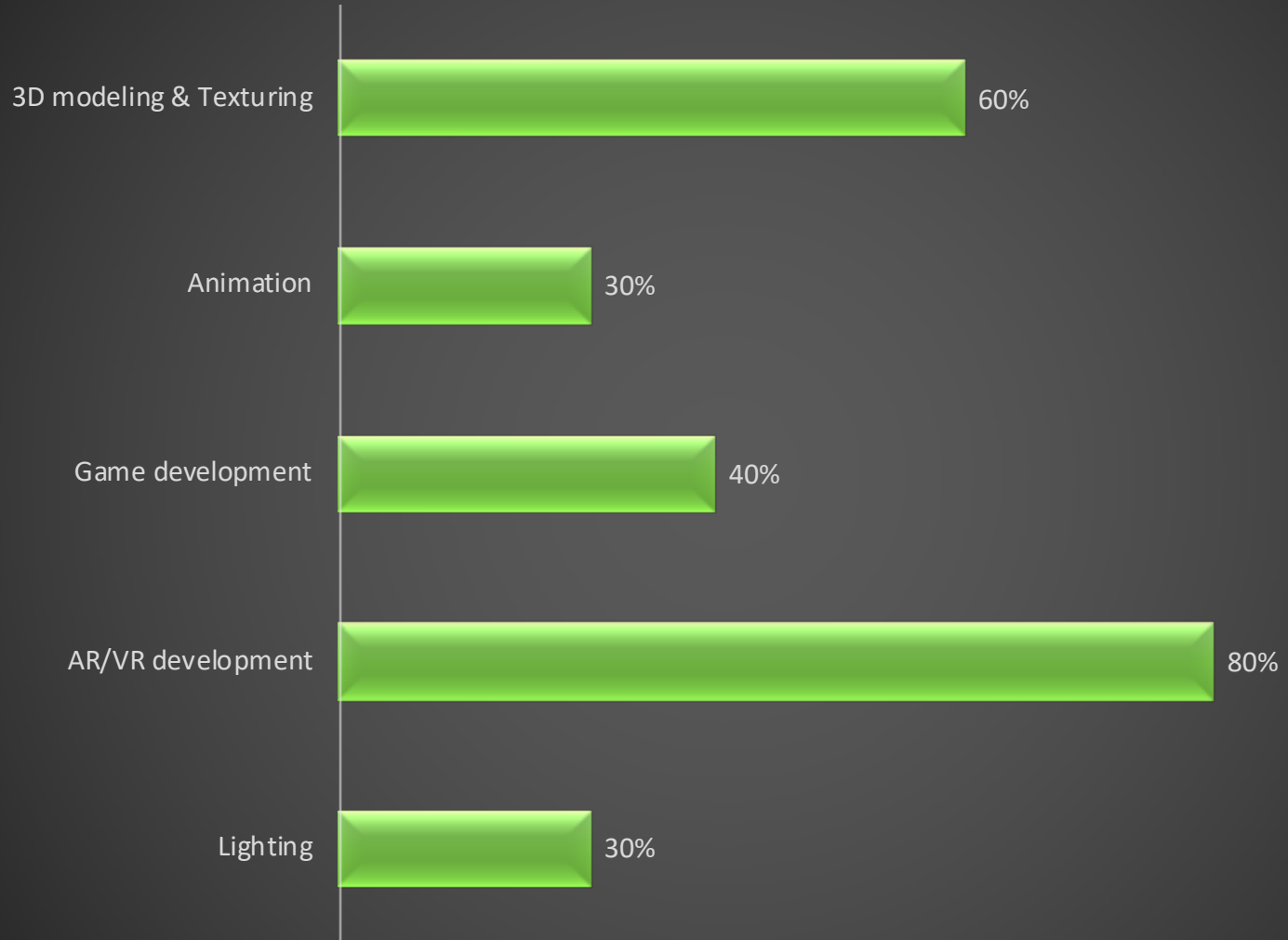
Our Team

The team consists of a bunch of passionate and fun-loving people. With an electric mix of expertise and experiences. We sit under one roof and we look to combine all our backgrounds to plan, create and execute extraordinary ideas, tailored to client's specific needs

We have a dedicated team for

- ❑ AR, VR and AI Programming
- ❑ Game Design and Development
- ❑ 3D modelling & PBR texturing
- ❑ 2D & 3D Animation
- ❑ Graphic design & motion graphics

Skill Distribution



Core Strength

❑ Interactive visualization

- An interactive/ customizable visualization of any kind of **products** and their functions can be visualized with latest technologies.

❑ VR technologies

- Visualizing a **virtual environment from inside** virtual environment using some high end devices such as HTC Vive, Oculus Rift, android phone or an iPhone.

❑ AR technologies

- Visualizing a **virtual object on real world** using some high end devices such as Kinect, android phone or an iPhone.

❑ E-Learning

- Interactive training application with **data tracking, analysis** and **report generation** for various industries.

Core Strength

- ❑ **VR/AR industrial training**
 - An immersive, **cost and time efficient** solution using AR and VR technology to **train the employees** of manufacturing, O&M sector
- ❑ **Unity3D based Application Development**
 - We use **Unity3D** to create client-specific immersive and interactive applications, which paves the way to explore the **NextGen technology-based solutions** for the client's problem statement.
 - The 3D training & virtual applications powered by Unity3D will create a niche in the training segment for **Mobile, PC, Web, and touch screen** devices especially in sectors like manufacturing and architecture.
- ❑ **Explanatory videos**
 - An **animated walkthrough video** of 30 seconds to 3 minutes, to explain a business idea, a product, a service, etc.

Design Stack

Modelling
&
Animation



Texturing



Lighting
&
Rendering



2D animation
&
Motion Graphics



Development Stack

AR app

Android / iOS



ARKit



ARCore



vuforia™

Unity MARS

AR Foundation

Web AR

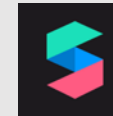
Mobile Browser



Amazon
Sumerian



8TH
WALL



model-viewer



3D based Application development

PC, mobile or touch
screen device



Motion Control

Android / PC



NUI TRACK

Technological Strength

Portable VR

 **oculus quest**



Medium quality portable VR
with hand tracking

 **VIVE FOCUS**



Medium quality portable VR

 **oculus Go**



Budget friendly
portable VR

PC based VR

 **htc VIVE**



High quality VR
With hand tracking

 **oculus rift s**



High quality VR
With hand tracking

Motion Control

LEAP
MOTION



Hand Tracking

TViCO



Body Tracking

KINECT



Body Tracking

Services Offered

- ❑ VR app development
(Mobile, PC & browser)
- ❑ AR app development
(iOS, Android & browser)
- ❑ VR based industrial training
- ❑ AR/VR based architecture visualization
- ❑ Interactive real-time product visualization
- ❑ Medical animation & visualization
- ❑ Explanatory video or infographic video
- ❑ Unity3D based application development
- ❑ 3D modelling (game ready)
- ❑ PBR texturing
- ❑ Rigging
- ❑ Animation
- ❑ e-Learning content
- ❑ Re-Topology
- ❑ Unity lighting & rendering
- ❑ Game development
- ❑ New Technology R&D

Focused Domains

- ❑ Manufacturing industry
- ❑ Operations & Maintenance
- ❑ Architecture & Real estate
- ❑ Education
- ❑ e-Learning
- ❑ Medical simulation
- ❑ Design Agency
- ❑ Automobile
- ❑ Entertainment
- ❑ IT service company
- ❑ Technology company
- ❑ Hospitality/Safety training
- ❑ BMS & CMMS
- ❑ Retail industry
- ❑ Video Game development
- ❑ Advertisement

Our Works

DEMO REEL

YOUTUBE CHANNEL

 [Click Here](#)

FULL DEMO REEL

 [Click Here](#)

DEMO REEL TRAILER

 [Click Here](#)

Our Works

LIVE APPs

Engine Viz AR



Place Furniture AR



Check out our apps in the store by **clicking** on the above **buttons**.

Sample Works

Industrial

Crane Simulation

Concept

- ❑ A VR based construction crane simulation which can be used as a training solution for crane operators

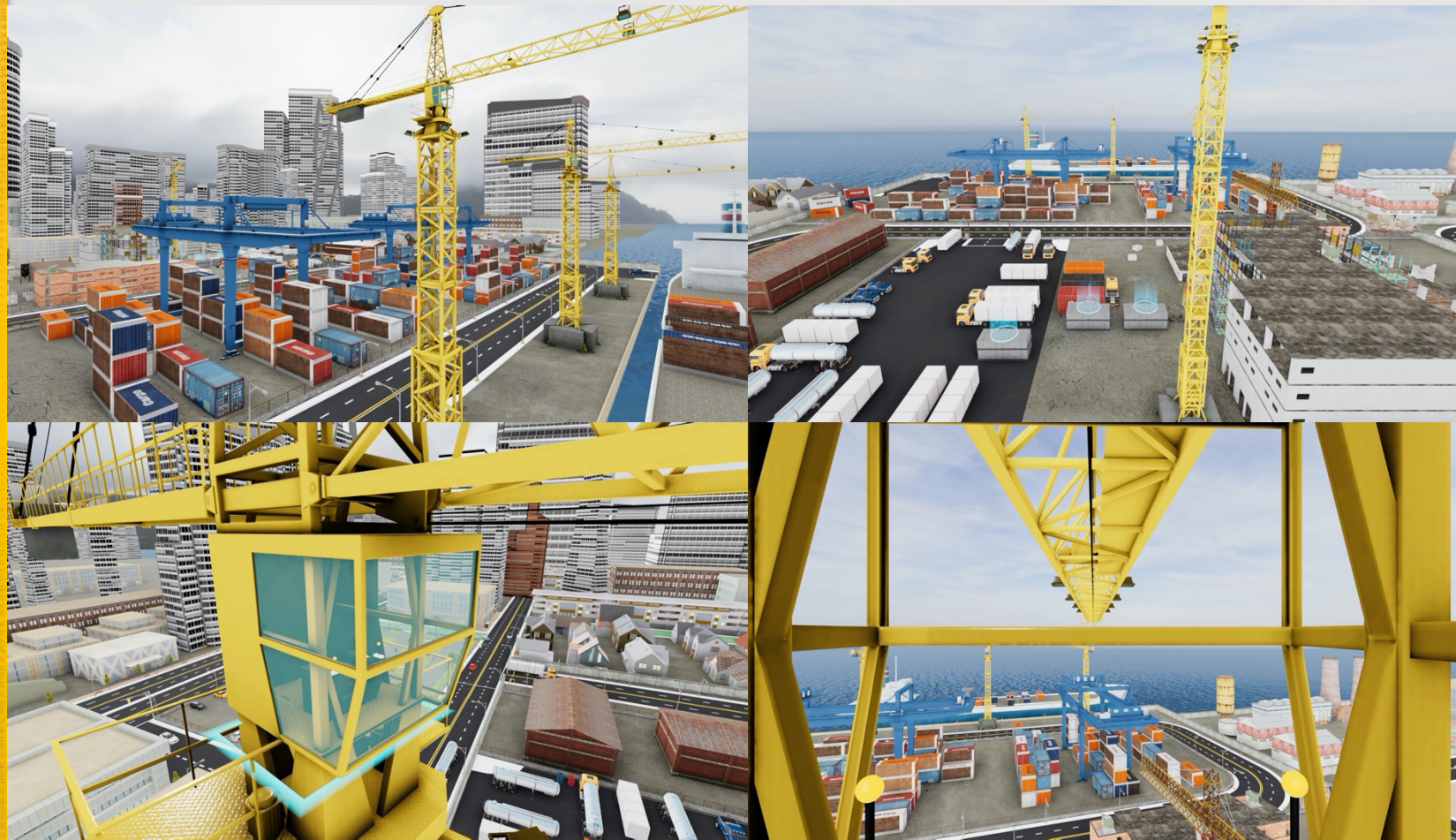
Features

- ❑ AI will assign a randomised task to the user
- ❑ AI will monitor the user's performance in real time
- ❑ The user can talk to AI via voice commands and text based communications
- ❑ The supervisor can get the real time analytics data using an external device via internet
- ❑ By setting up a sensors in the user's legs, this application can also be used to test if the user is having height phobia.
- ❑ The supervisor can take a report about each employee individually comparing his previous performance in graphical representation

Sample Works

Industrial

Crane Simulation



Sample Works

Industrial

Bike Assembly Simulation

Concept

- A VR based bike assembling and disassembling simulation in which the user can assemble and disassemble the bike, do some minimal troubleshooting process, do paint works, lubrication and welding works.

Features

- The bike is made into 300+ modular pieces in which each piece is individually accessible
- There will be a AI robot inside the environment which can help the user in the process by showing him details about the parts and showing the blueprints
- AI will monitor the user's performance in real time
- The user can talk to AI via voice commands and text based communications
- The supervisor can get the real time analytics data using an external device via internet
- The supervisor can take a report about each employee individually comparing his previous performance in graphical representation

Sample Works

Industrial

Bike Assembly Simulation



Sample Works

Service & product Manual

Digital Service & Product Manual

Concept

Service and product manual in digital form provides structured and linked workflows with up to date instructions regardless of the place, so you don't have to deal with multiple versions of same instructions. The implementation of digital product guides will allow to significantly improve your productivity and that of your customers.

Features

- ❑ Structured workflow – Digital work instruction applications can give you a perfect overview of the logical structure of your enterprise/Product procedure in multiple languages.
- ❑ Always up to date – The biggest advantage of digital instruction application is that you can update and disseminate all your documents with one click on your desktop
- ❑ Instant Notification – Simply by opening the application your team will know what is expected of them on the workday. Your operator can also get instant feedback or message on values he inputs, on next steps following a certain input.
- ❑ Enriched instructions with Media and 3D view – The interactive 3D view with detailed description of the product and steps to followed can give a clear perspective at the time of servicing the tiniest parts inside a product.

Digital Service & Product Manual

Sample Works Digital Manual

Categories

Pumps RTG Traversers Indicators

Recently Visited

3298 Goulds 3610 Pump 3620 Pump 3640 Pump

Training progress

Pumps 23% RTG 33% Traversers 78% Indicators 90% Guards/Covers 90%

Remove the coupling guard

Parts List and Materials of Construction

2D View

Product Description

General Description 3196-1 FRAME

The 3196-1 frame is a horizontal overhung open impeller centrifugal pump. This pump is ANSI B73.1 compliant. The model is based on 5 power ends and 21 hydraulic sizes.

3D View

Goulds Pumps

MODEL	SIZE	HP	FT	HD	MOD	SIZE	STD	MAT'L	CONSTR	SER	N
3196	10	10	10	10	10	10	10	10	10	10	10

WARNING Avoid death or serious injury. Do NOT operate pump against closed valves or blocked lines.

Sample Works

Augmented Reality

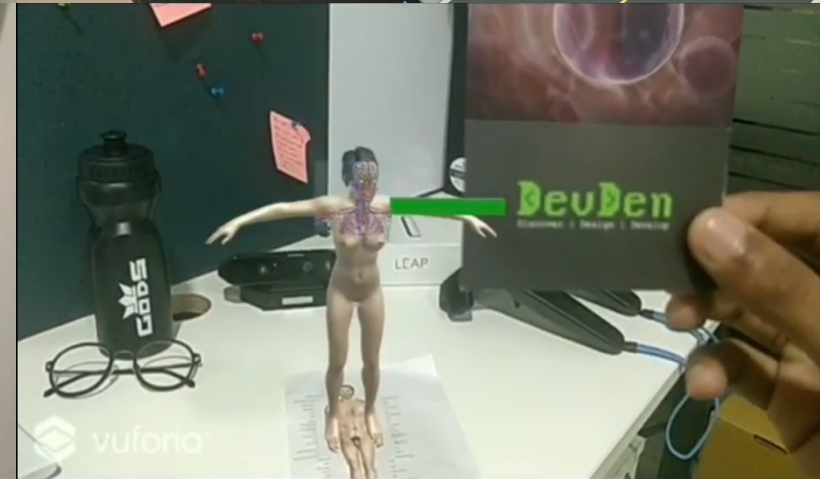
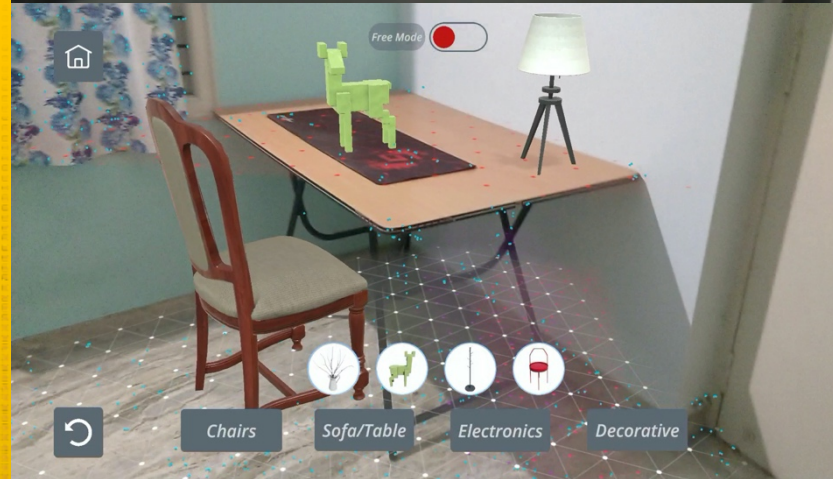
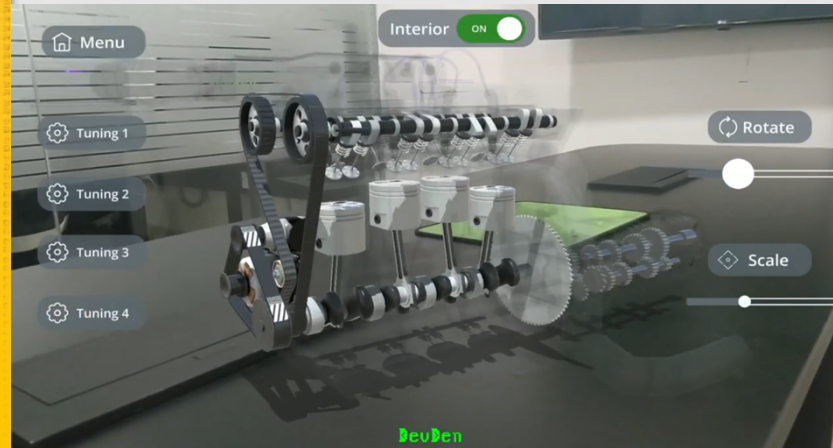
Augmented Reality applications

- ❑ **Place Furniture** – With the help of place furniture AR application you can choose suitable furniture and decorative for your dream home at your continent time and place.
- ❑ **Engine Visualization** – Engine Visualization AR application is a new form of Augmented reality application that offers users to visualize an engine in the real world along with its functions. The user will be able to view the engine in detail from all sides and figure out the features of different tunings.
- ❑ **AR Arch Viz** – Its difficult visualizing your home from complex looking engineering plans. AR arch viz app can help you visualize both elevation and interior of your house and any other Architecture before even its ready to occupy
- ❑ **AR medical App** – In the era of a computer replacing the books, innovative technologies like augmented reality pave way for the fun, attractive and exciting way of education. One can study human anatomy through this AR application.

Sample Works

Augmented Reality

Augmented Reality applications



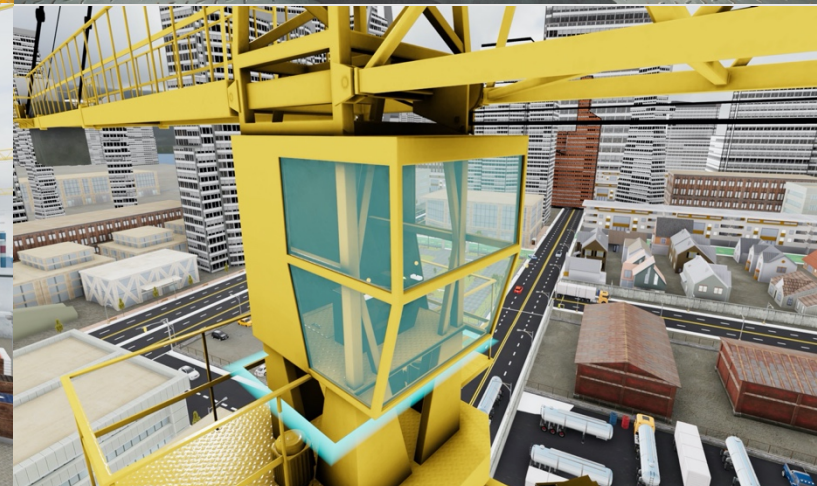
Architecture Visualization



Environment Design



VR Industrial Training



Medical Visualization



VR Showroom/Museum

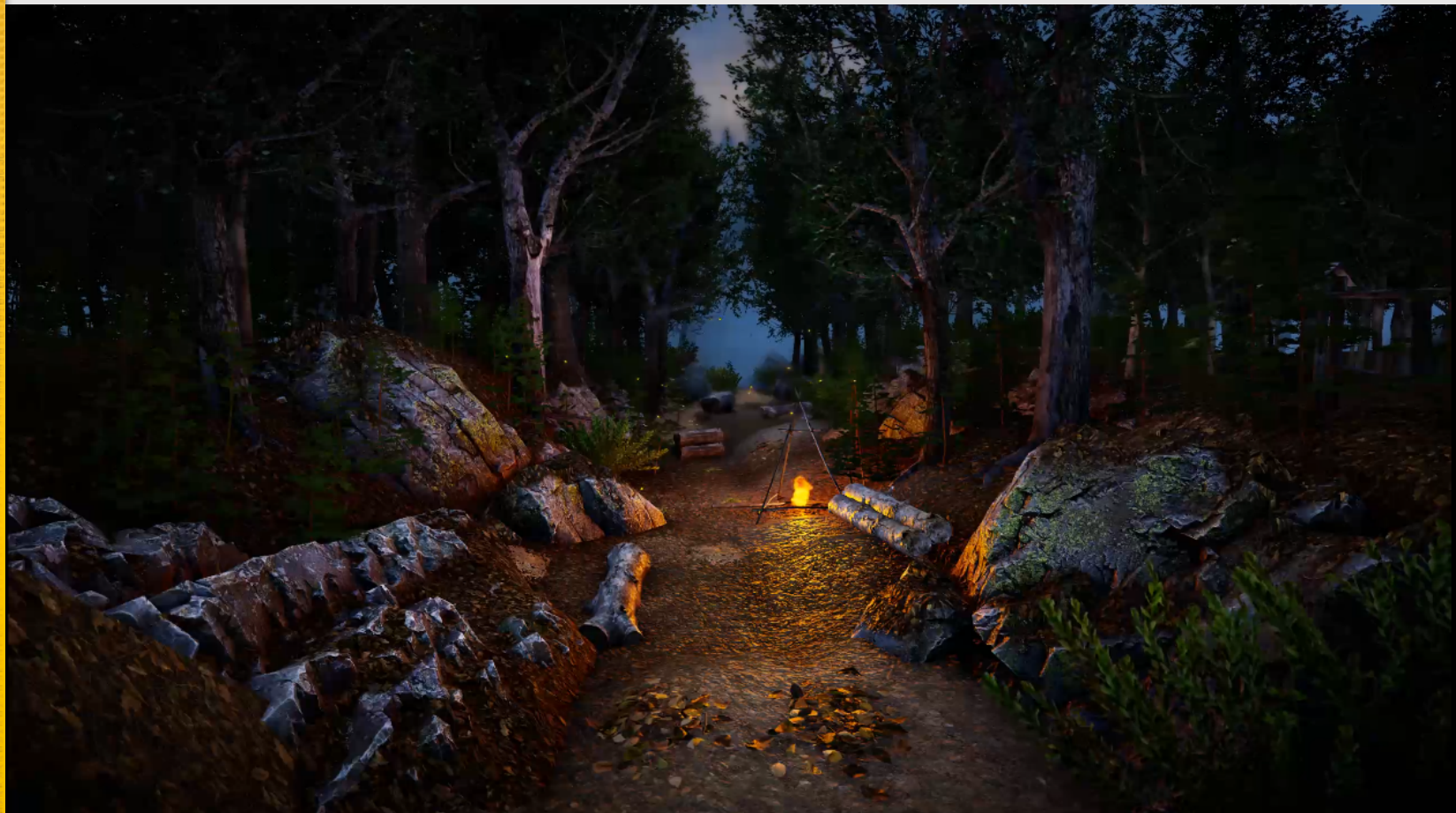


Engagement Model

Design & Technology Projects

	Dedicated Team	Time and Material	Fixed Price
Project size and Duration	Large Minimum 6 months	Medium to large Minimum 3 months	Small Short (1 to 2 months)
Client Control	High	Medium	Low
Dedicated Project Manager	Depends	Yes	Yes
Pricing	Fixed for each team member per month	Fixed on hourly, Daily, Weekly basis	Fixed Price for a project
Budget	Highly flexible	Moderately flexible	Fixed
Team Scalability	Yes	Yes	NA
Scope of work	Large	Small to Medium	Small
Requirement	Evolving	Evolving	Defined
Billing Cycle	Monthly	Weekly/Monthly	Milestone Basis (Billed 25% at Start)

Thank You



Contact: Prabhakaran S

Mail id: prabhakaran@devdensolutions.com

Mobile: +91 95512 33329

Find Us at

